

DSE-Aluprinter

ANODISED ALUMINIUM PRINTER

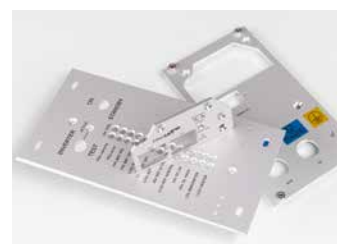
Model DSE-60 Aluprinter



Polychromal



The DSE-series technology offers great flexibility, especially when working with small production runs, single pieces and unique signs.

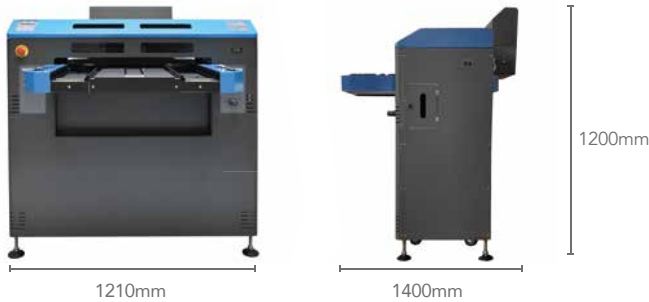


The benchmark printer for printing in anodised aluminium

Polychromal, DSE-60 Aluprinter

DSE-Aluprinter

ANODISED ALUMINIUM PRINTER



The DSE-60 is a compact flat-bed inkjet printer that can print directly in anodised aluminium sheets with superb scratch resistance due to sub surface printing. Using the Polychromal DuraColour inks, you can print ultra-sharp long lasting images and graphical symbols.

Other printers in the series:

DSE-100: 1000 x 1000 mm max. print area

DSE-200: 2000 x 1000 mm max. print area

TECHNICAL SPECIFICATIONS PRINTER

Model:	DSE-60
Printing technology:	Ink-jet (Micro Piezo Head)
Printing size:	Max print area 562,5 x 650 mm, max. height 280 mm
Printing resolution:	1440 x 1440 dpi, 1440 x 720 dpi, 720 x 720 dpi, all uni and bi-directional
Duracolour Ink:	C, M, Y, K, T
Print speed:	1440 x 1440 dpi, 500 x 325 mm - uni: 18 min, bi: 14 min 1440 x 720 dpi, 500 x 325 mm - uni: 12 min, bi: 7:20 min 720 x 720 dpi, 500 x 325 mm - uni: 10 min, bi: 6 min
IMS:	Ink Management System, stirring and circulating ink inside the inkbottles and ink tubes
Ink containers:	Refillable bottles (8x)
Drying device:	Integrated drying device to allow drying at low table/bed temperatures
IME:	Integrated Ink Mist Extraction system
Vacuumpump:	Integrated Low maintenance vacuum pump
Interface:	LAN network/ USB
Weight:	240 kg (uncrated)
Table/bed:	Heated and with vacuum
Installation space:	5m ² or more
Floor loading capability:	450kgf/m ² or more
Power requirements:	AC 200V - 240V ± 10%, 50/60Hz ± 1Hz
Compressed air requirements:	(freeze) dried compressed air, 6 – 10 Bar pressure, consumption appr. 60 l/min at 2,5 Bar (only when printing)
Capacity:	Recommended power fuse 16A
RIP software:	Kothari Print Pro



Robust design



Main controls



User friendly interface



Air and power connections