



DSE-Aluprinter

ANODISED ALUMINIUM PRINTER

The DSE140 is a flatbed printer featuring a moving portal design and an impressive table size of 1400 mm by 680 mm. The printer is capable of printing directly in anodised aluminium plates and objects with superb scratch resistance due to sub surface printing. Using the Polychromal DuraColour inks, you can print ultra-sharp long lasting images and graphical symbols.

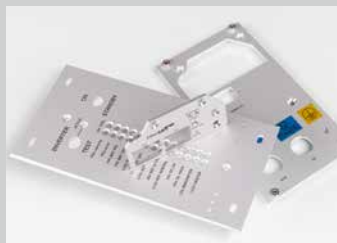


TABLE HEATING & VACUUM

The table can be heated up, Ensuring thermal stability that supports consistent print quality regardless of ambient environmental conditions. It is divided into two sections, each featuring independently controlled heating zones for optimal temperature management. Equipped with two low-noise, low-maintenance vacuum pumps, the system ensures that materials stay securely in place during printing. Each pump operates independently for flexible vacuum control.

BRIDGE HEIGHT

Capable of printing directly into anodised aluminium plates and objects up to 105 mm in thickness.

OBSTACLE DETECTION

Features automatic obstacle detection using advanced laser technology to prevent potential collisions.

AUTOMATIC NOZZLE CHECK

The system continuously monitors nozzle performance. If missing nozzles are detected, it initiates an automatic cleaning cycle. Should recovery fail, the Nozzle Area Select function is triggered, allowing printing to continue using the available nozzle area. This minimizes downtime while maintaining high-quality output.

REFERENCE STOPS

Pneumatic reference stops ensure precise media alignment and automatically retract during printing to eliminate the risk of head collisions.

DRYING DEVICE

An integrated drying device enables efficient drying even at low table temperatures (only in combination with Duraseal plates), supporting print quality and workflow speed.

STURDY CHASSIS

Built on a highly robust and precisely engineered chassis, the printer offers excellent stability. The precision aluminium rail system ensures smooth, accurate printhead movement, contributing to long-term mechanical reliability and consistent ink dot placement. This results in sharper prints and high output quality, even during prolonged production runs.

Polychromal, DSE140 - Aluprinter

DSE-Aluprinter

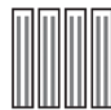
ANODISED ALUMINIUM PRINTER

PRINTING SYSTEM

Utilizes two staggered Piezo Drop-on-Demand Epson printheads, printing in five colours: Cyan, Magenta, Yellow, Black, and Transparent.



1st Printhead: CMYK



2nd Printhead: Transparent

SIGNAL TOWER

A multi-colour signal tower provides a clear visual indicator of the printer's current operational status at a glance.



Signal Tower

TECHNICAL SPECIFICATIONS PRINTER

Model:	DSE140 - Aluprinter				
Printing technology:	Ink-jet (on demand piezo printheads)				
Printing size:	Max print area 1400 x 680 mm				
Bridge height:	Variably adjustable to maximum 105 mm				
Total weight:	545 KG				
Printing resolution:	1440 x 1440 dpi	1400 x 650 mm	uni 94 min	bi 52 min	
	720 x 1440 dpi	1400 x 650 mm	uni 47 min	bi 26 min	
	720 x 720 dpi	1400 x 650 mm	uni 24 min	bi 13 min	
Ink type:	DuraColour				
Ink colours:	CMYK + Transparent				
Cartridge contents:	220 cc each				
Print heads:	Epson, 2 pieces (staggered configuration)				
Interface:	LAN network				
RIP software:	Fiery Digital factory				
Installation space:	4770 x 3600 mm				
Recommended Temp:	18°C - 25°C				
Recommended RH:	45% - 80% RH				
Power specification:	Input voltage:	AC 100V to 240V $\pm 10\%$			
	Input frequency:	50/60Hz ± 1 Hz			
	Input load current:	16 A			
Power consumption:	Power off:	AC200V to 240V: 3.2 W or below			
	Sleep mode:	44 W or below			
	Operation:	Max 3200 W			



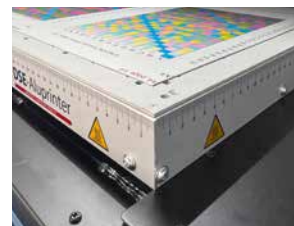
Control panel



Pneumatic reference stops



Cartridges



Ruler fixed on the sides